



MATRIX LIVING



MATRIX LIVING

佛山市筑建集成房屋科技有限公司

Since 2012

CONTACT US

Landline : +86 0757-2996-8388
 Mobile : +86 138-2550-3701(Gary)
 +852 5771-9285(Gary-HK)
 +86 189-0249-0986(John)
 Email : garygan@matrixliving.com
 info@matrixliving.com
 Website : matrixliving.com



公司地址/FACTORY ADDRESS

筑建国际集团/ZHU JIAN INTERNATIONAL GROUP(HK)

香港中环士丹利街8-12号万利丰中心10楼/10th Floor, Manly Plaza, 8-12 Stanley Street, Central, Hong Kong

- ▶ 佛山市筑建集成房屋科技有限公司/FOSHAN ZHUJIAN MODULAR HOUSE CO.,LTD
 佛山市高明区荷城街道恒良路7号/No.7 Hengliang Road, Hecheng Street, Gaoming, Foshan
- ▶ 佛山市筑建集成房屋科技有限公司高明分公司(恒良路厂区)/FOSHAN ZHUJIAN MODULAR HOUSE CO.,LTD GAOMING BRANCH(HENGLIANG FACTORY)
 佛山市高明区荷城街道恒良路7号/No.7 Hengliang Road, Hecheng Street, Gaoming, Foshan
- ▶ 佛山市筑建集成房屋科技有限公司高明分公司(惠福厂区)/FOSHAN ZHUJIAN MODULAR HOUSE CO.,LTD GAOMING BRANCH(HUIFU FACTORY)
 佛山市高明区荷城街道惠福路1号C3厂房/C3 factory, No.1 Huifu Road, Hecheng Street, Gaoming, Foshan
- ▶ 佛山市欣筑科技有限公司/FOSHAN XINZHU TECHNOLOGY CO.,LTD
 佛山市高明区荷城街道恒良路7号/No.7 Hengliang Road, Hecheng Street, Gaoming, Foshan

模块化建筑

MODULAR INTEGRATED CONSTRUCTION



MATRIX LIVING



第一基地
NO. 1 Factory



第二基地
NO. 2 Factory



第三基地
NO. 3 Factory

企业文化

CORPORATE CULTURE

质量 责任 合作 创新

QUALITY, RESPONSIBILITY, COLLABORATION, INNOVATION

我们秉承:

「勇于开拓，精益求精，回报社会，筑建未来」的企业使命，以人为本，严格把控，诚信经营，坚持走在建筑工业化的前沿。未来，筑建将会继续专注于模块化建筑技术的发展，为全世界的人们提供更舒适，更安全和更环保的居住环境。

Matrix Living has been firmly committed to the corporate mission of "Courage", "Keep improving", "Contribute", and "Building the future", emphasizing people-oriented management, strict quality control, and integrity management, while staying at the forefront of the industrialization of construction. Going forward, Matrix Living will continue to focus on the development of modular construction technology, providing a more comfortable, safer, and more environmentally friendly living environment for people around the world.

“以人为本 诚实正直 合作创新”为企业价值观；促进健康和安
全，尊重合作伙伴，持续发展，
共享发展目标；培养未来的领
导者，推动创新发展。

"People oriented, honest a cooperative innovation" is the enterprise value; Promote health and safety, respect partners, sustainable development and share development goals; Cultivate future leaders and promote innovation and development.

筑建科技一直以来锐意进取，不断突破，未来我司将会继续专注于模块化建筑技术的发展，为全世界的人们提供更加舒适、安全和更环保的居住环境，我们承担着巨大的社会责任感，并非常关注环境环保，这也一直会体现在我们的生产实践中。

MATRIX LIVING has always been determined to forge ahead and make breakthroughs. In the future, our company will continue to focus on the development of modular construction technology to provide people around the world with a more comfortable, safe and environmentally friendly living environment. We bear a great sense of social responsibility and pay great attention to environmental protection, This will always be reflected in our production practice.

筑建集成在装配式模块化生产的能力主要体现于：

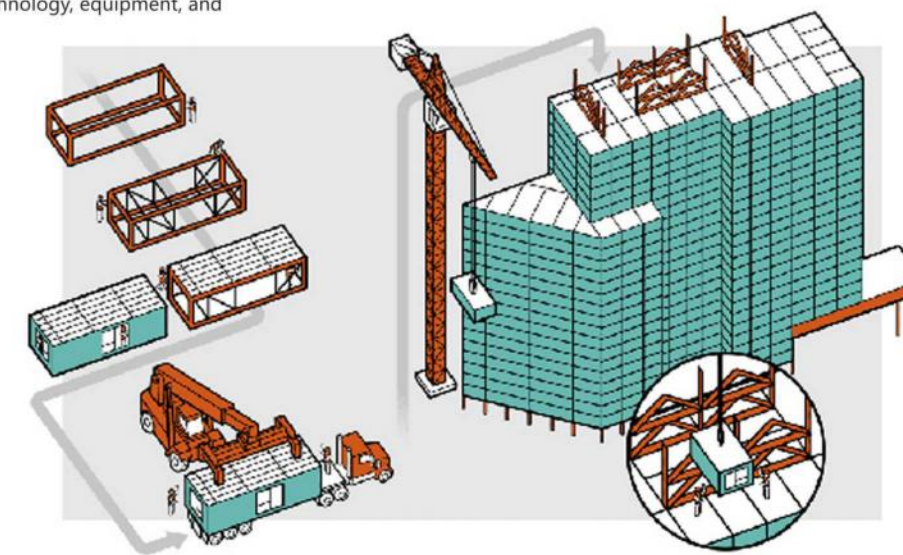
Matrix Living's capabilities in prefabricated modular production are mainly reflected in the following:

- ▶ 拥有三个生产基地，总生产区域面积高达14万平方米，为装配式模块化生产提供充足的生产场地。
With three production bases covering a total area of 140,000 square meters, Matrix Living provides ample space for prefabricated modular production.
- ▶ 智能化设备的投入带来了生产的自动化，精准化。
The introduction of intelligent equipment has brought automation and precision to the production process.
- ▶ 由80名模块化建筑专家组成的技术团队为高、精、尖的模块化生产提供强有力的技术支撑。
A technical team consisting of 80 modular construction experts provides strong technical support for high-precision and advanced modular production.
- ▶ 模块化生产主要由钢结构生产以及箱体内部装饰团队组成，生产团队以及管理队伍庞大，具有850~1000人。
Modular production primarily consists of steel structure manufacturing and interior decoration teams, with a large production and management workforce of 850 to 1,000 people.
- ▶ 装配式模块化生产每日产能高达50~80 modules, 每月产能高达1300~2000 modules, 每年产能高达12000~20000 modules。
The daily production capacity for prefabricated modules reaches 50 to 80 modules, with monthly output at 1,300 to 2,000 modules, and an annual production capacity of 12,000 to 20,000 modules.
- ▶ 随着海内外市场的拓展，筑建集成不断加大对场地、技术、设备、人员的投入，生产能力持续增长，每年增长保持于12%~18%。
As the domestic and international markets expand, Matrix Living continues to increase investment in facilities, technology, equipment, and personnel. Production capacity grows steadily at an annual rate of 12% to 18%.



单位(Unit): 模块(Module)

生产能力 Production Capacity	日产量 Daily Production Capacity	月产量 Monthly Production Capacity	生产能力 Yearly Production Capacity
最少 Minimum	50	1300	12000
最多 Maximum	80	2000	20000



模块化建筑优势

MODULE ADVANTAGE

1

安全坚固

SAFE AND SECURE

可抵抗台风、洪水、地震等几乎所有自然灾害

It can resist almost all natural disasters such as typhoon, flood and earthquake

2

方便快捷

CONVENIENT

以集装箱为单元运输，可实现一个月从安装到入住

With container as unit transportation, one month from installation to occupancy can be realized



3

灵活多变

FLEXIBLE

以箱体为基础，任意搭配和组合空间

Based on the box, any collocation and combination of space

5

节约成本

COST-SAVING

从生产到安装、入住，可在3-6个月内完成，现在组装仅需少量工人和机械，节约大量人力物力

From production to installation, occupancy, can be completed in 3-6 months, only small number of workers and machinery assembly, saving a lot of manpower and material resources

4

节能环保

ENERGY SAVING

从运输到安装可实现0噪音0污染，可结合使用任何环保能源

From transportation to installation, it can achieve zero noise and zero pollution, and can be combined with any environmental protection energy

MATRIX LIVING 应用领域

APPLICATION AREA

人居MIC系列



公共建筑类
PUBLIC BUILDING



酒店公寓类
HOTEL APARTMENT



文旅类
CULTURAL TOURISM

设备MIC系列



数据中心
DATA CENTER



设备箱类
EQUIPMENT CONTAINER



功能箱类
FUNCTIONAL CONTAINER

钢结构系列



冷弯薄壁类
LIGHT STEEL



重钢结构类
HEAVY STEEL STRUCTURE



钢结构加工类
STEEL STRUCTURE PARTS



深圳侨香学校
SHENZHEN QIAOXIANG SCHOOL

6

公共建筑类产品--学校 PUBLIC BUILDING PRODUCTS --SCHOOLS

MiC数量：145个

设计层数：3层

占地面积：3066平方米

学校配备有标准教室，专业教室，办公室，阅览室，卫生间，舞蹈室，会议室，楼梯等。

Number of MiC: 145

Design layers: 3

Area occupied buildings : 3066m²

The school is equipped with standard classrooms, specialized classrooms, offices, a library, bathrooms, dance studios, meeting rooms, stairs, and more.



深圳翠竹学校
SHENZHEN CUIZHU SCHOOL



深南外国语学校
SHENNAN FOREIGN LANGUAGE SCHOOL



深圳东晓学校
SHENZHEN DONGXIAO SCHOOL



7



8

珠海医院
ZHUMAI HOSPITAL



公共建筑类产品--医院

PUBLIC BUILDING PRODUCTS --HOSPITALS

MiC数量：129个

Number of MiC: 129

设计层数：3层

Design layers: 3 layers

总建筑面积：33900平方米

Total gross floor area : 33,900m²

住院部面积：4000平方米

Inpatient area: 4000 square meters

深圳妇幼保健院发热门诊
FEVER CLINIC OF SHENZHEN MATERNAL AND CHILD HEALTH HOSPITAL



PCR实验室
PCR LABORATORY



湛江人民医院发热门诊
FEVER CLINIC OF ZHANJIANG PEOPLES HOSPITAL



9



10 吉布提国际酒店
ESCALE INTERNATIONAL HOTEL



酒店公寓类产品--酒店

HOTEL /APARTMENT PRODUCTS--HOTEL

MiC数量：203个

Number of MiC: 203

设计层数：4层

Design layers: 4 layers

占地面积：15,000平方米

Area occupied buildings : 15,000m²

建造最高高度：14.8米

Maximum building height: 14.8 m

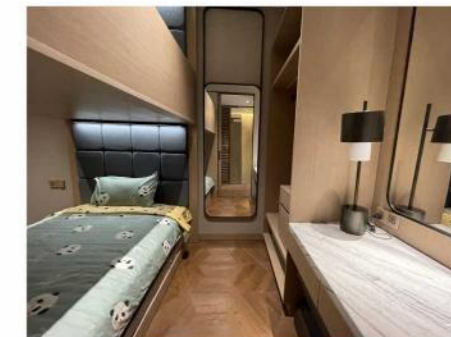
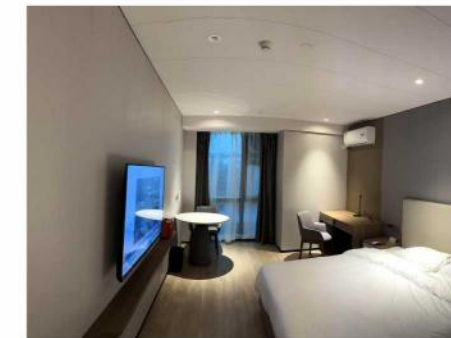
深圳国际防疫酒店
SHENZHEN INTERNATIONAL
PREVENTION HOTEL



美国移动酒店
AMERICAN MOBILE HOTEL



斐济索菲特酒店
SOFTTEL FIJI HOTEL





欧洲公寓
EUROPE BER3



酒店公寓类产品--公寓

HOTEL /APARTMENT PRODUCTS APARTMENTS

MiC数量：224个

设计层数：4层

占地面积：4000平方米

由224个标准40尺高柜组成，每个单元由3个集装箱组合而成，中间配有过道，每套房间带有独立厨卫。

Number of MiC: 224

Design layers: 4 floors

Area occupied buildings : 4,000 m²

Comprising 224 standard 40-foot-high containers, each unit is made up of three combined containers with a central hallway. Each unit includes a private kitchen and bathroom.



美国别墅
ZENNI HONE US DUPLEX

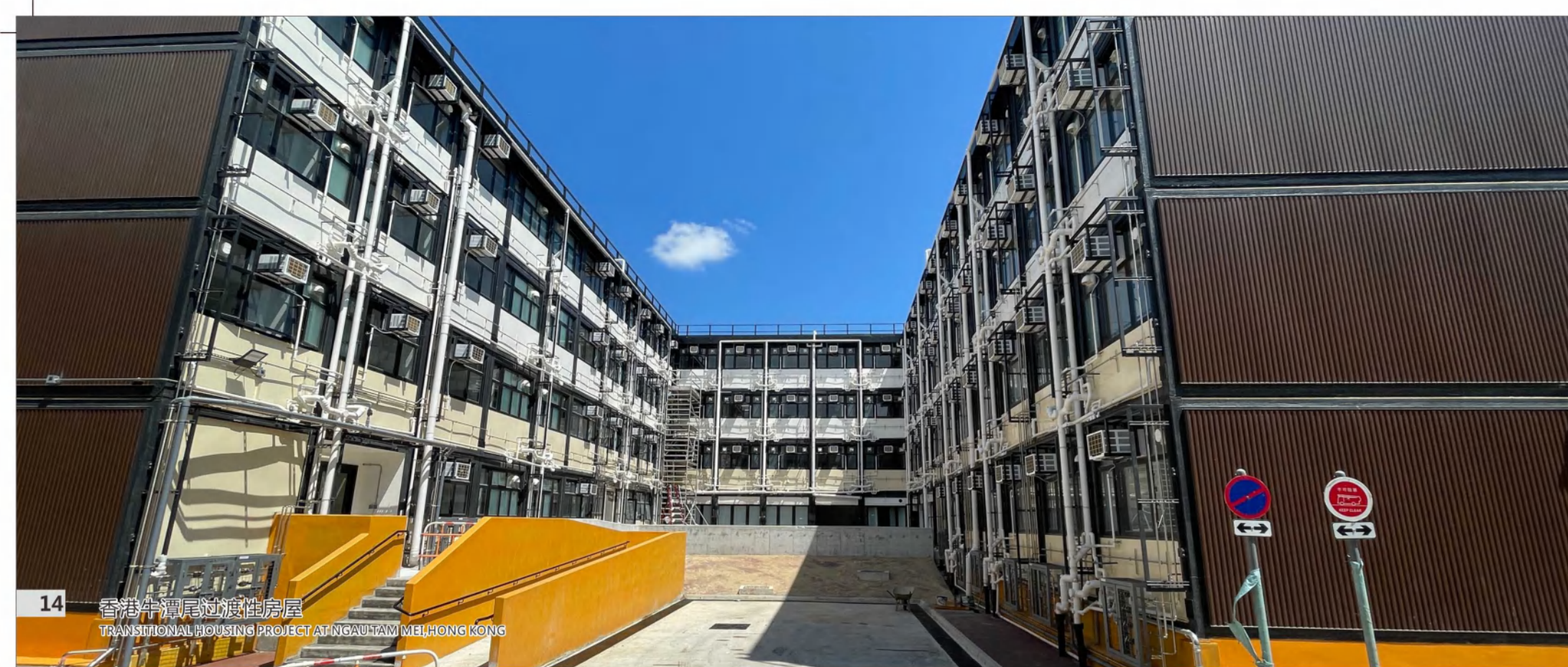


北极圈公寓项目
ARCTIC CIRCLE APARTMENT



瑞典学生公寓
SPANGA 299



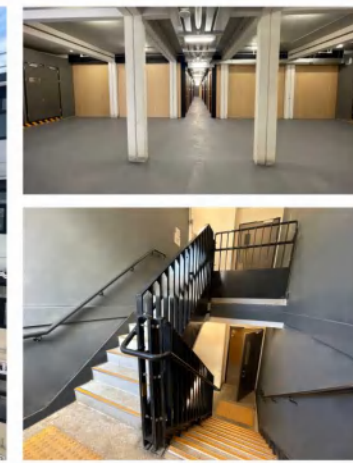
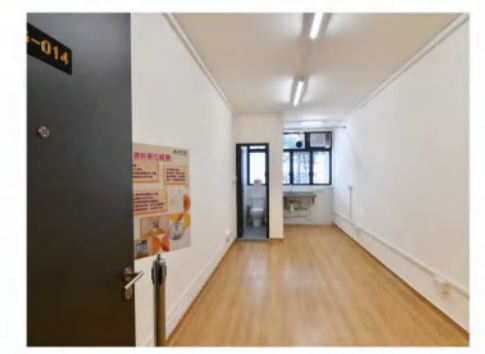
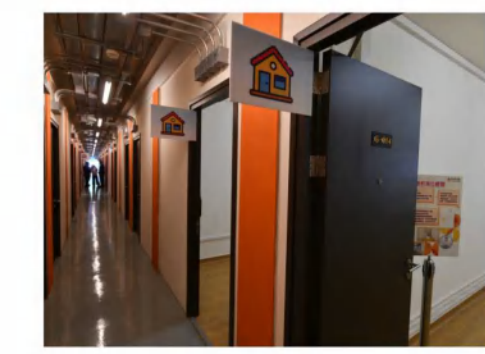


14 香港牛潭尾过渡性房屋
TRANSITIONAL HOUSING PROJECT AT NGAU TAM MEI, HONG KONG

香港牛潭尾过渡性房屋
TRANSITIONAL HOUSING PROJECT AT
NGAU TAM MEI, HONG KONG



香港圣海兴路过渡性房屋
TRANSITIONAL HOUSING PROJECT
AT TSUEN WAN - HONG KONG



公屋 PUBLIC HOUSING

MiC数量：1400+
 设计层数：4层
 项目占地：21,731平方米
 项目包括4幢约4层高住宅楼宇，每个单位附设独立浴室及煮食空间，提供1,107个单位，可容纳约2,700人。

Number of MiC : 1400+
 Design layers: 4 layers
 Project area: 21,731m²
 The project consists of four residential blocks of about 4 storey, each with an en suite bathroom and cooking space, providing 1,107 units with a capacity of about 2,700 people.

香港长顺街过渡性房屋
TRANSITIONAL HOUSING PROJECT AT
CHEUNG SHUN STREET, HONG KONG





16

冰岛环岛旅游项目
ICELAND OSKAR



文旅类产品 CULTURAL TOURISM PRODUCTS

冰岛环岛旅游项目，是由两个标准的40尺海运集装箱拼接而成的豪华别墅，总面积为60平方米，做成两房一厅一卫的单元。此别墅所有门窗均采用ALUK品牌，断桥隔热型材三层中空钢化玻璃，室内灯光均连接WiFi操控，集奢华，舒适，智能于一体。

The ICELAND OSKAR project consists of a luxurious villa made by joining two standard 40-foot shipping containers, with a total area of 60 square meters. The villa features two bedrooms, a living room, and a bathroom. All doors and windows use ALUK brand materials with triple-pane insulated tempered glass, and the indoor lighting is WiFi-controlled, combining luxury, comfort, and smart technology.

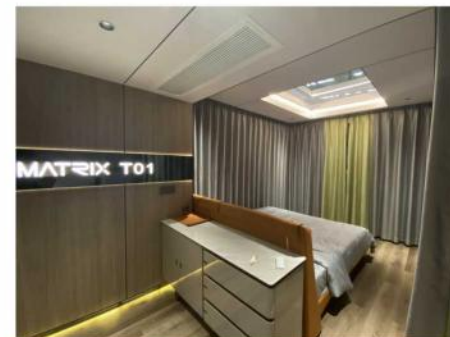
苹果舱
APPLE CABIN



旅行者系列
TRAVEL T01



旅行者系列
TRAVEL M03



17



北京冬奥会项目
BEIJING WINTER OLYMPIC GAMES

商业类产品 COMMERCIAL PRODUCTS

该项目主要是冬奥会的无接触取货点、奥林匹克大家庭、三个综合办公楼、新闻播报BRS、露天楼梯，它们是由31个20尺的集装箱模块、23个40尺的集装箱模块和一个楼梯集装箱模块构建而成。整个项目建造时长仅用了30天。

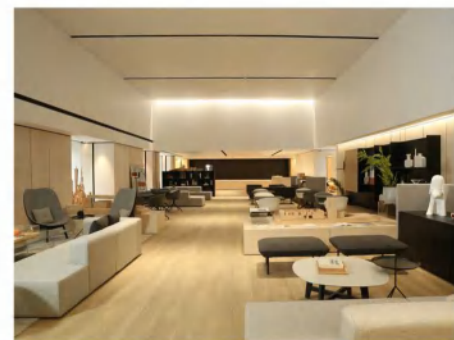
The project primarily includes contactless pickup points for the Winter Olympics, the Olympic Family area, 3 office complexes, news broadcasting BRS, and an open-air staircase. These facilities are built using 31 20-foot container modules, 23 40-foot container modules, and a staircase container module. The entire construction took only 30 days to complete.



商业综合体
COMMERCIAL COMPLEX



商业办公楼
COMMERCIAL OFFICE BUILDING



商业街市
COMMERCIAL STREET





菲律宾NGCP数据中心项目
NGCP DATA CENTER PROJECT IN PHILIPPINES



设备类产品 EQUIPMENT PRODUCTS

MiC数量：12个
 模块尺寸：12192*3490*4150mm；
 12192*3490*4150mm；7015*3490*4150mm；
 7015*3490*4150mm
 配置包括：主设备仓，配电仓，走廊仓
 Number of MiC: 12
 Size: 12192*3490*4150mm;
 12192*3490*4150mm; 7015*3490*4150mm;
 7015*3490*4150mm
 Configuration: main equipment modular, distribution
 modular, corridor modular

冷却设备箱
COOL MODULAR



电力方仓
POWER MODULAR



数据中心
DATA CENTER



液压箱
HYDRAULIC CONTAINER



柴油箱
DIESEL ENGINE MODULAR



储能设备箱
STORAGE EQUIPMENT MODULAR



电气设备箱
ELECTRICAL EQUIPMENT MODULAR



水处理设备箱
WATER TREATMENT EQUIPMENT MODULAR



光伏设备箱
SHUNTE EQUIPMENT MODULAR





澳大利亚项目
AUSTRALIAN PROJECT

冷弯薄壁类产品

LIGHT STEEL

冷弯薄壁类产品具有重量轻、功能多、能工业化生产，深受行业青睐，是一种极具发展前途的结构型产品。我司拥有两条大型龙骨自动生产线车间，生产设备将先进的三维设计技术和智能化设备深度融合，集生产及拼装一体化生产线，能生产50、70、89、100mm常用型装修隔墙龙骨及建筑结构龙骨，生产厚度达到0.5-1.2mm，产品热销欧洲、澳新及美加等多个国家。

Cold formed thin-walled products are favored by the industry because of their light weight, multiple functions and industrial production. They are a structural product with great development prospects. Our company has two large-scale keel automatic production line workshops. The production equipment deeply integrates advanced three-dimensional design technology with intelligent equipment, integrates production and assembly, and can produce 50, 70, 89 and 100mm common decoration partition keel and building structure keel, with a production thickness of 0.5-1.2mm. The products are sold well in Europe, Australia, New Zealand, the United States and Canada and other countries.



英国轻钢房屋
BRITISH LIGHT STEEL HOUSE



DFMA墙体
DFMA WALL



整体卫浴
INTEGRATED BATHROOM





钢结构加工
STEEL STRUCTURE PROCESSING



钢结构类 STEEL STRUCTURE

钢结构生产线每月交付产品总重量达到8600吨，包括钢结构加工、钢结构厂房、预埋件加工等产品。我司拥有两条大型柔性MiC生产线，两条大型内装生产线，一条特大型打砂、喷漆、烘干生产线（双喷漆 双烘干），集生产和拼装一体化生产线要求，同时满足不同客户的需求。

The total weight of products delivered by the steel structure production line every months reaches 8600 tons, including steel structure processing, steel structure workshop, embedded parts processing and other products. Our company has two large-scale flexible MiC production lines, two large-scale interior decoration production lines, and an extra large sanding, painting and drying production line (double painting and double drying), which integrates the requirements of the integrated production line of production and assembly, and meets the needs of different customers at the same time.

钢结构加工
STEEL STRUCTURE PROCESSING



钢结构厂房
STEEL STRUCTURE WORKSHOP



钢结构配件加工
EMBEDDED STEEL STRUCTURE PARTS



合作伙伴 COOPERATIVE PARTNER

仁济医院
Yan Chai Hospital
建业建筑有限公司
CHINNEY CONSTRUCTION COMPANY
新福港建设集团有限公司
SFK Construction Holdings Limited
德材建筑
TECHOY
巴斯夫集团
The Chemical Company
建装科技集团有限公司
Jianzhuang Technology Group Co., Ltd
美孚石油
Mobil
中兴集团
ZTE CORPORATION
中国建筑集团有限公司
CSCEC
中集集团
CIMC GROUP
中信集团
CITIC GROUP
深圳市腾讯计算机系统有限公司
TENCENT
中国石化
SINOPEC
美的集团
MIDEA GROUP
华为技术有限公司
HUAWEI
Astute
NEW EMPIRE
GYPROC
华南理工大学
SOUTH CHINA INSTITUTE OF TECHNOLOGY



MATRIX LIVING

AI 工具辅助智能化设计 INTELLIGENT DESIGN POWERED BY AI TOOL



1 AI驱动组件库系统 AI component library system

利用先进的AI驱动组件库系统，涵盖从模块（3D和2D）到材料和零件的多层次组件，确保设计的全面性和灵活性。 Utilizing an advanced AI-driven component library system, covering multi-level components from modules (3D and 2D) to materials and parts, ensuring comprehensiveness and flexibility in design.

2 自动化设计生成 Automated Design Generation

AI根据用户输入的参数和约束，自动从不同组件库中提取并生成设计，用户可灵活调整，满足特定需求。 AI automatically extracts and generates designs from various component libraries based on user-input parameters and constraints, allowing users to adjust flexibly to meet specific needs.

3 高详细度 High Level of Detail

组件库深度达到450LOD，包含结构、MEP及表面材料等信息，支持自动生成工程量清单（BOM）。 The component library reaches a depth of 450 LOD, including information on structures, MEP and surface materials, supporting automatic generation of Bill of Materials (BOM).

4 成本与时间透明 Cost and Time Transparency

通过与工厂库存的链接，用户可实时了解总体成本和完成时间，便于项目管理。 Through a link with factory inventory, users can track overall costs and completion time in real-time, facilitating project management.

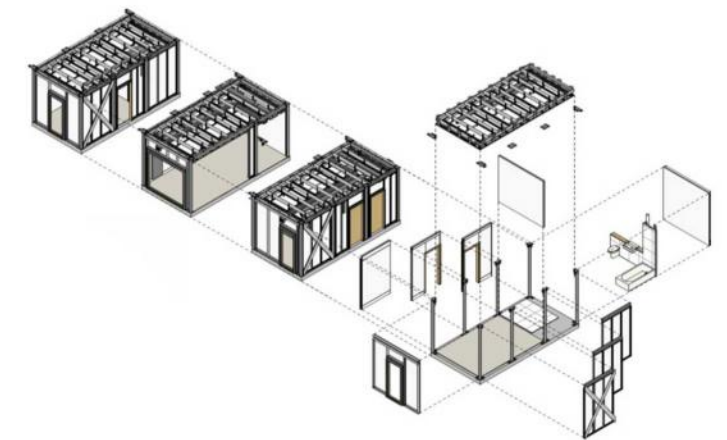
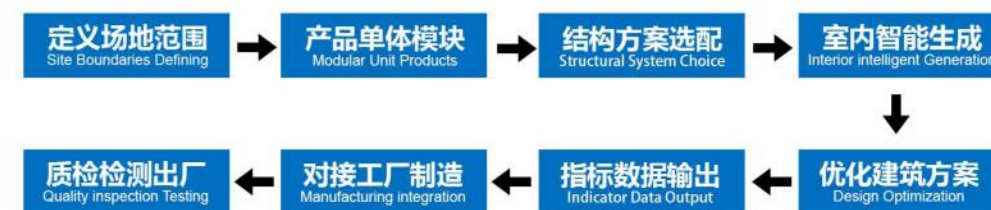
5 跨学科同步 Interdisciplinary Synchronization

AI算法解决了建筑设计中的信息孤岛问题，确保建筑师在修改设计时，所有学科能够实时同步，提升协作效率。 Interdisciplinary Synchronization: AI algorithms eliminate information silos in architectural design, enabling real-time synchronization across all disciplines during design changes, boosting collaboration efficiency.

6 全面评估 Comprehensive Evaluation

可同时查看详细设计、可视化效果和估值，促进全面判断，显著提高生产效率。 Users can simultaneously view detailed designs, visualizations, and estimates, facilitating comprehensive judgment and significantly improving production efficiency.

AI工具辅助的智能化设计流程 Intelligent design process powered by AI tool



拥有多项模块化设计专利
Hold a number of modular design patents



配备独立创新的设计中心团队，引用了新型的BIM设计技术--可视化、协调性、模拟性、优化性、可出图性等优势。

Equipped with an independent and innovative design center team, it cites the advantages of new BIM design technology - visualization, coordination, simulation, optimization, graphing and so on.



佛山市筑建集成房屋科技有限公司成立于2012年，专注于装配式建筑的设计、生产和销售，拥有超过10年的模块化集成房屋建造经验。

Established in 2012, Matrix Living is a leading company specializing in the design, fabrication, and selling of modular buildings with more than 10 years' experience in modular construction industry.



我们实现了模块化集成房屋从钢结构到内部装修的一体化生产，拥有MiC装配式房屋、模块化特种箱、设备箱、钢结构加工等系列产品和服务，产品广泛应用于住宅别墅、公共建筑、旅游度假、大型赛事、工地临建、野外营地、部队营房等领域。

We specialize in prefabricated modular construction, from steel structures to interior decoration. Our product lines include MiC prefabricated houses, special modules, equipment modules, steel structure, and other related products and services. Our products are widely used in apartment, villa, public building, tourism, competition, construction site, field camp, military barrack and other fields.

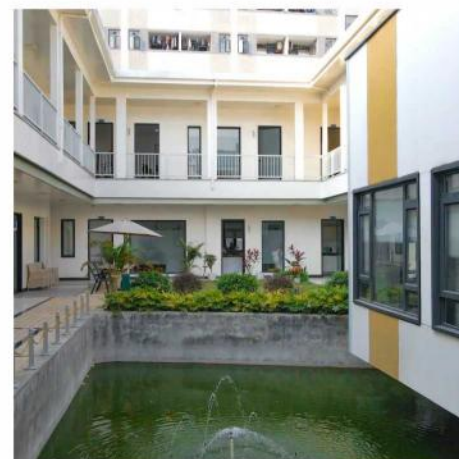


公司简介
COMPANY INTRODUCTION



未来，筑建将会继续专注于模块化建筑技术的发展，为全世界的人们提供更舒适，更安全和更环保的居住环境。

Going forward, Matrix Living will continue to focus on the development of modular construction technology, providing a more comfortable, safer, and more environmentally friendly living environment for people around the world.

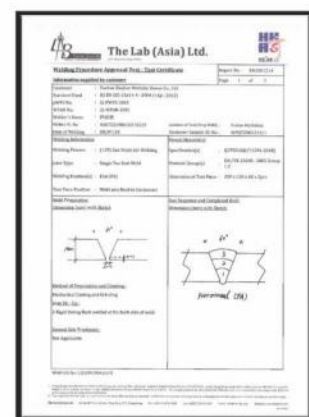


MATRIX LIVING

质量管理体系
QUALITY MANAGEMENT SYSTEM

Matrix Living Co., Ltd. has focused on the modular housing market for many years, obtained **ISO9001** Quality Certification System, **ISO14001** Environmental Management System, **ISO45001** Occupational Health and **Safety Management System**, steel structure production and welding process, and passed the certification of TUV, a German professional certification company. Let our products have international first-class quality assurance. And **European Union CPR building system**, **American NTA**, **British BSI** and **Hong Kong IPA**.

筑建公司多年来专注于模块房屋市场，获得ISO9001质量认证体系、ISO14001环境管理体系、ISO45001职业健康体系，钢结构生产及焊接工艺，通过了德国专业认证公司TUV的认证。让我们的产品拥有了国际化的一流质量保证。以及欧盟CPR建筑体系、美国NTA、英国BSI、香港IPA。



MATRIX LIVING

业务分布
BUSINESS DISTRIBUTION

Since 2012

NORTH AMERICA

America 美国
Canada 加拿大
Mexico 墨西哥

EUROPE

Germany 德国
Britain 英国
France 法国
Switzerland 瑞士
Netherlands 荷兰
Sweden 瑞典
Finland 芬兰
Ukraine 乌克兰
Russia 俄罗斯
Iceland 冰岛
Austria 奥地利

ASIA

Korea 韩国
Japan 日本
North Korea 朝鲜
Pakistan 巴基斯坦
India 印度
Bengal 孟加拉
Vietnam 越南
Thailand 泰国
Malaysia 马来西亚
Philippines 菲律宾
Maldives 马尔代夫

SOUTH AMERICA

Venezuela 委内瑞拉
Brazil 巴西
Argentina 阿根廷
Chile 智利

AFRICA

Angola 安哥拉
Djibouti 吉布提
South Sudan 南苏丹
Eritrea 厄立特里亚
Libya 利比亚

OCEANIA

Australia 澳大利亚
New Zealand 新西兰





大型激光切割机
LARGE-SCALE LASER CUTTING MACHINE



龙骨生产线
KEEL PRODUCTION LINE



大型激光切割机
LARGE-SCALE LASER CUTTING MACHINE



500T龙门液压设备
500T GANTRY HYDRAULIC EQUIPMENT

设备 EQUIPMENT

MATRIX
LIVING

公司愿景
COMPANY VISION



1.三个坚持

THREE PERSISTENCE

坚持致力于提供更先进的技术
坚持走绿色低碳的可持续发展道路
坚持以人为本的管理理念

Persistently committed to providing more advanced technology, Adhere to the path of green, low-carbon and sustainable development; Adhere to the people-oriented management concept.

2.发展目标

DEVELOPMENT GOALS

年销售额10亿
开拓多渠道网点
装配式产品推广至全球应用

Annual sales of 1 billion yuan
Develop multi-channel outlets
Promotion of assembled products to global applications.

3.发展计划

DEVELOPMENT PLAN



● 表示重点发展地区
INDICATES KEY DEVELOPMENT AREAS
● 表示未来开发业务地区
INDICATES THE BUSINESS AREA TO BE DEVELOPED IN THE FUTURE